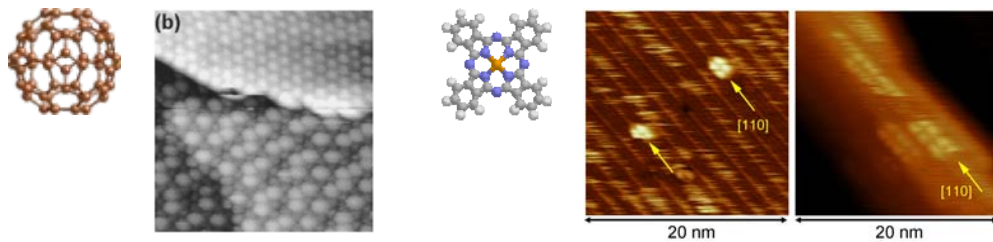


Luca Giovanelli

Post-doc CNRS, Equipe Nanostructuration, L2MP

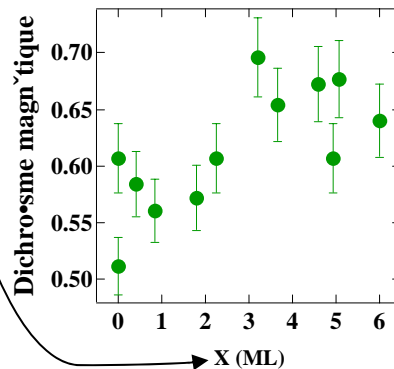
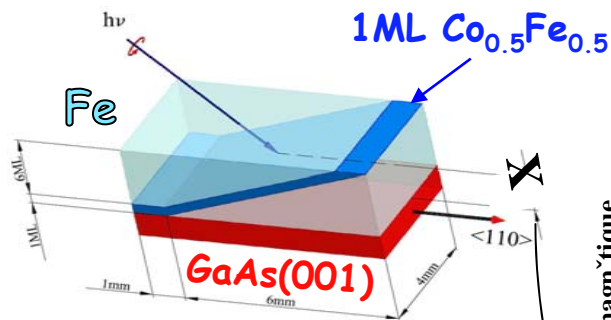
Thèse (CRMC2, Marseille) : STM, Photoémission



1 ML C₆₀/Ag(001) 30x30nm²

Pb-Pc/InSb(001)-4x2

Beamline APE, ELETTRA : Dichroïsme magnétique



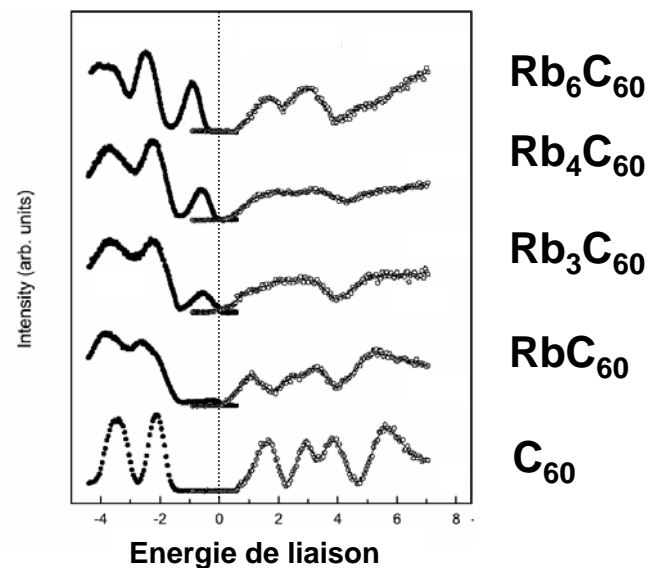
Beamline BaD EIPh, ELETTRA

- Responsable de la construction d'une ligne de lumière
- Etude des systèmes moléculaires fortement corrélés

Rb_xC₆₀, x=1,3,4,6

Photoémission directe et inverse

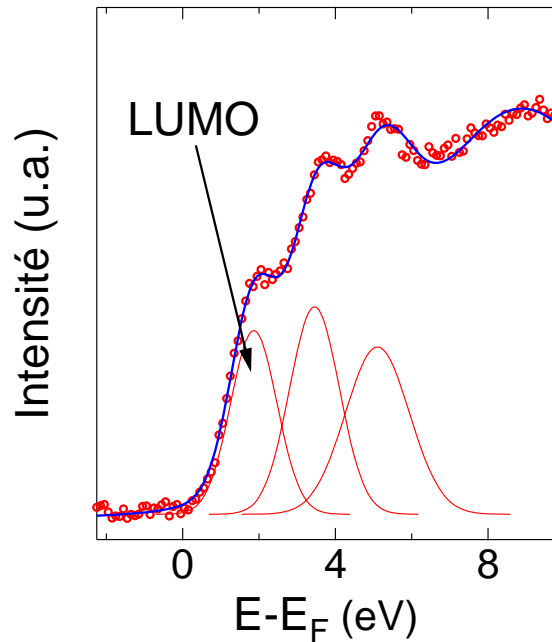
PES IPES



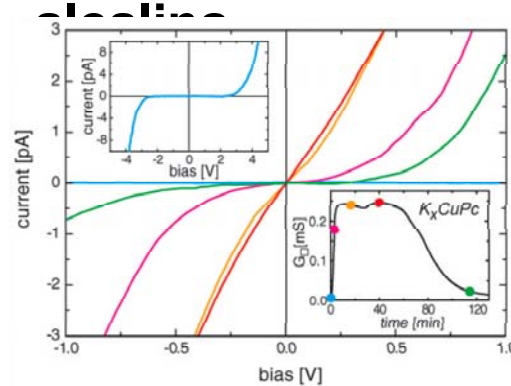
Auto-organisation de molécules fonctionnalisées

Résultats préliminaires

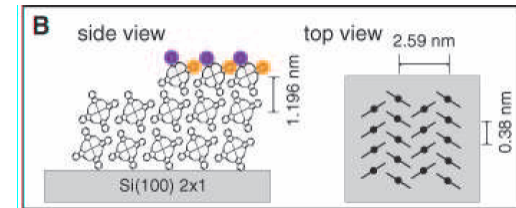
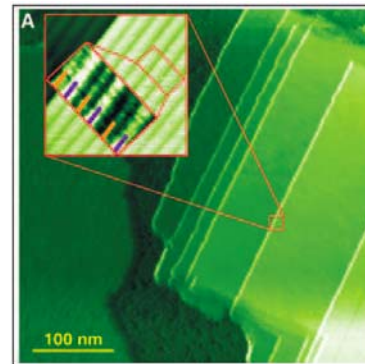
ZnPc/SiC(001) Spectre IPES



Dopage de Phtalocyanines par métaux



K_xCuPc / Si(001)
Mesures STC et conductance:
métallicité après dopage 0 < x < 4
(A. Morpurgo, Delft)



Mesures STM : les molécules sont
« debout » : le dopage est plus efficace

E. Tosatti et al. :
Strong Correlations in Electron Doped Phthalocyanine
Conductors Near Half Filling, *PRL* 93, 117002 (2004)